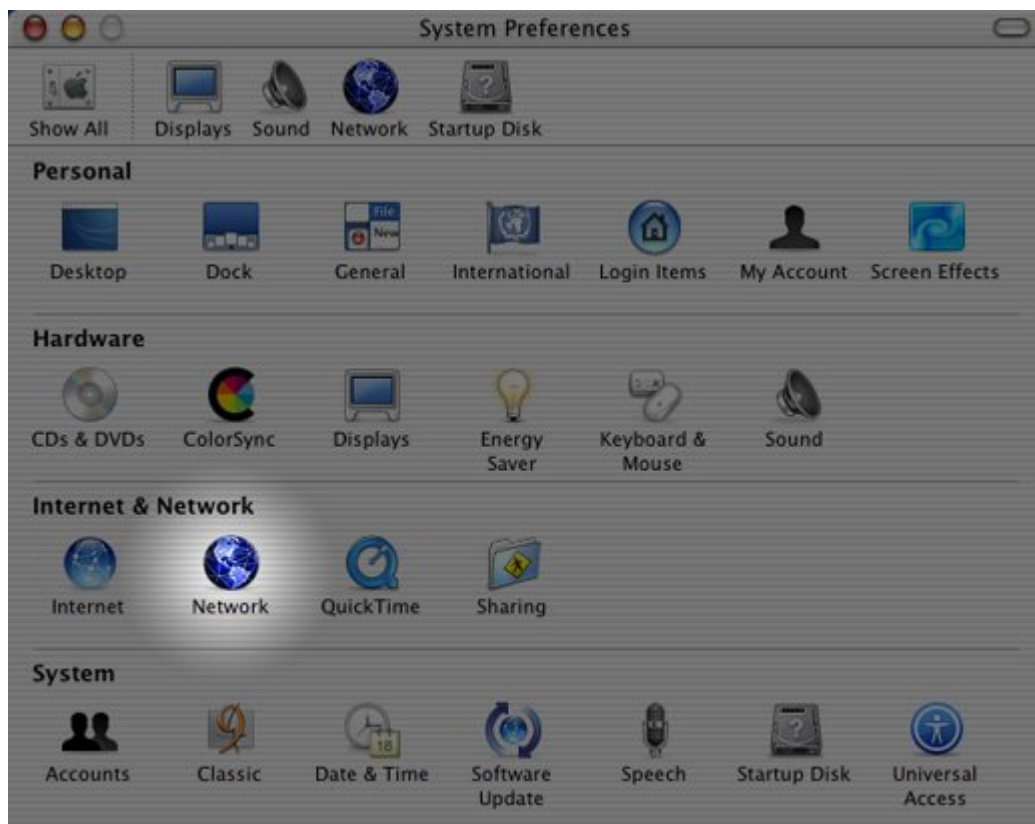


## PPPoE SETUP FOR MAC OS X 10.2

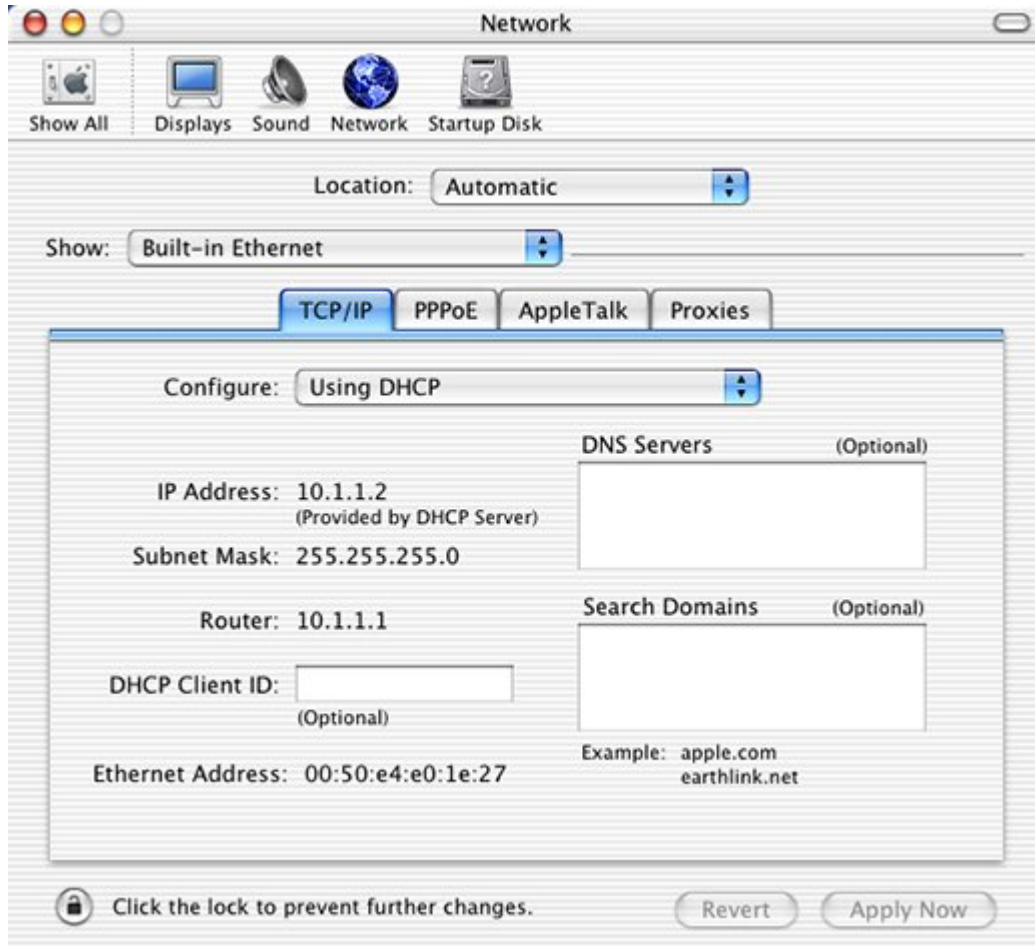
- 1) Go to System Preferences by either selecting it from Apple icon in the top menu bar or open it from the Dock.



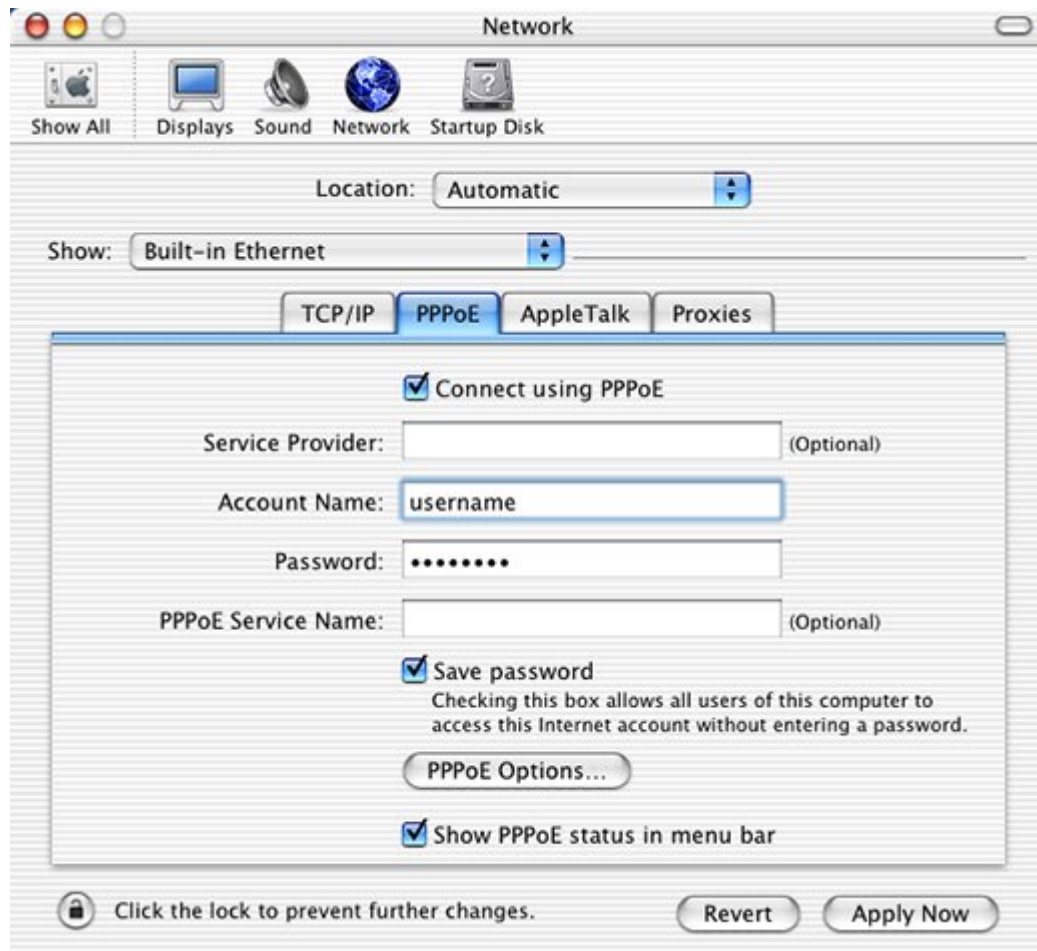
- 2) Click the "Network" icon to continue.



3) By choosing Network you will automatically be dropped into the setup for Built-in Ethernet.



4.) From here choose the PPPoE tab and you should see something similar to the below except it will not be ticked. Simply add a tick and fill in your iiNet account details as shown below. By ticking "Show PPPoE status in menu bar" a small object will appear in your top menubar. This will allow you to control the connection from your desktop. Click "Apply Now" and your Mac will now attempt to connect using PPPoE.



Notice the new icon in the top right of your screen? This new icon will allow you to activate this PPPoE connection. Once connected to the Internet, you can also use the same icon to disconnect.

Enter the information for your account:

- Username: Enter your username, e.g. [6047366500@pppoe.net](mailto:6047366500@pppoe.net)
- Password: Enter your password e.g. [V6H1E5](#)
- Confirm password: Enter your password again



## PPPoE SETUP FOR MAC OS X 10.3 and 10.4

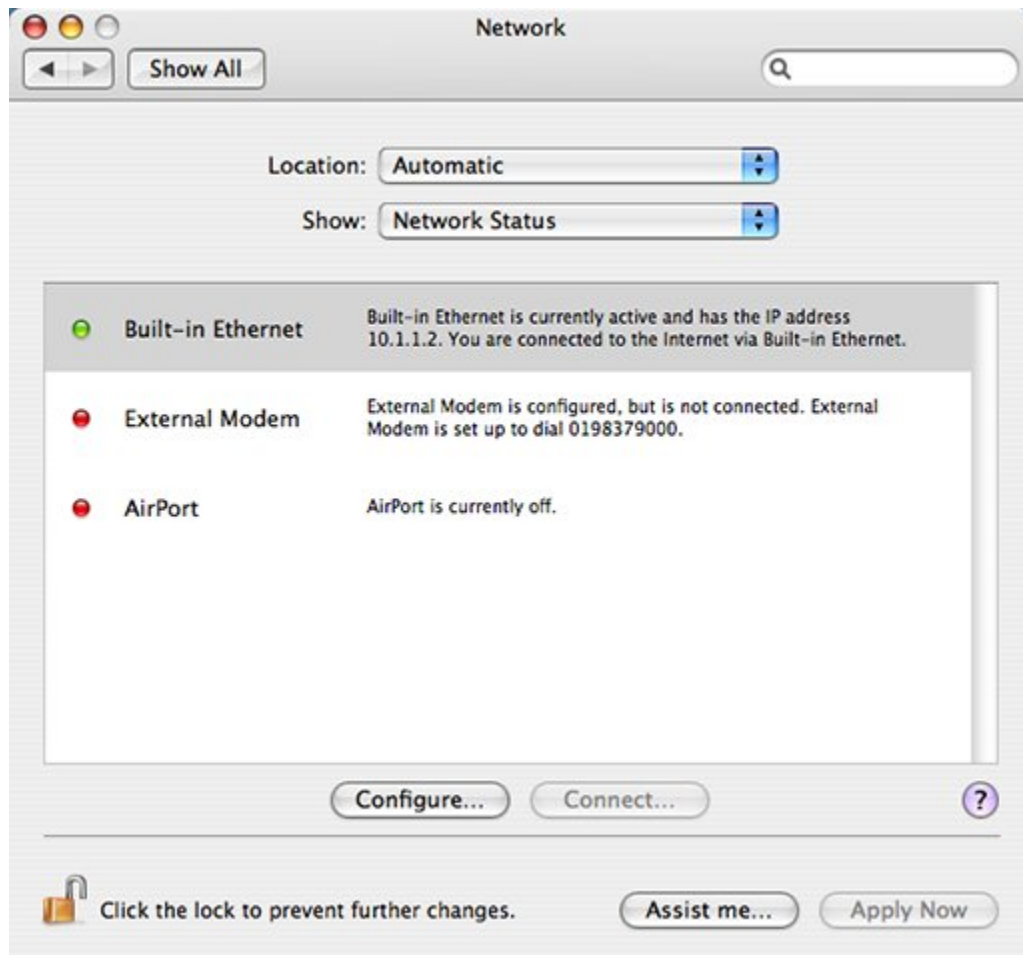
1) To set your Mac to connect via PPPoE, go to "System Preferences" by either selecting it from Apple icon in the top menu bar or from the Dock.



3) Click the "Network" icon to continue.



4) Select "Built-in Ethernet" from the dropdown labelled "Show".



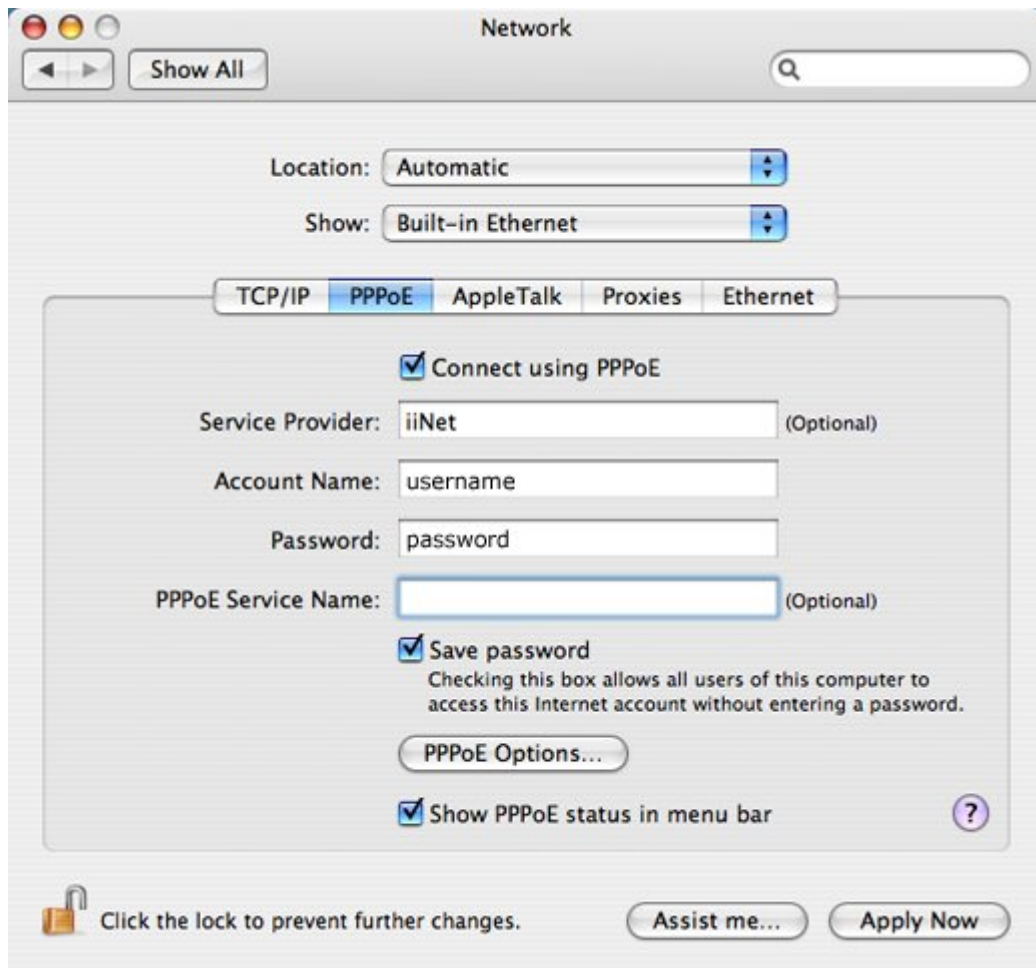
5) Select the tab labelled "PPPoE" and ensure you have completed the following:

Enter the information for your account:

- Username: Enter your username, e.g. [6047366500@pppoe.net](mailto:6047366500@pppoe.net)
- Password: Enter your password e.g. [V6H1E5](#)
- Confirm password: Enter your password again

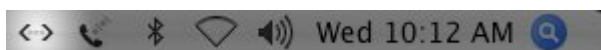
- Tick "Show PPPoE status in menu bar"; a small icon will appear in your top menu bar

Click "Apply Now".



- 5) The icon highlighted below should now be visible in the top right of your screen. This will allow you to activate the connection.

Once connected to the Internet, you can also use the same icon to disconnect.

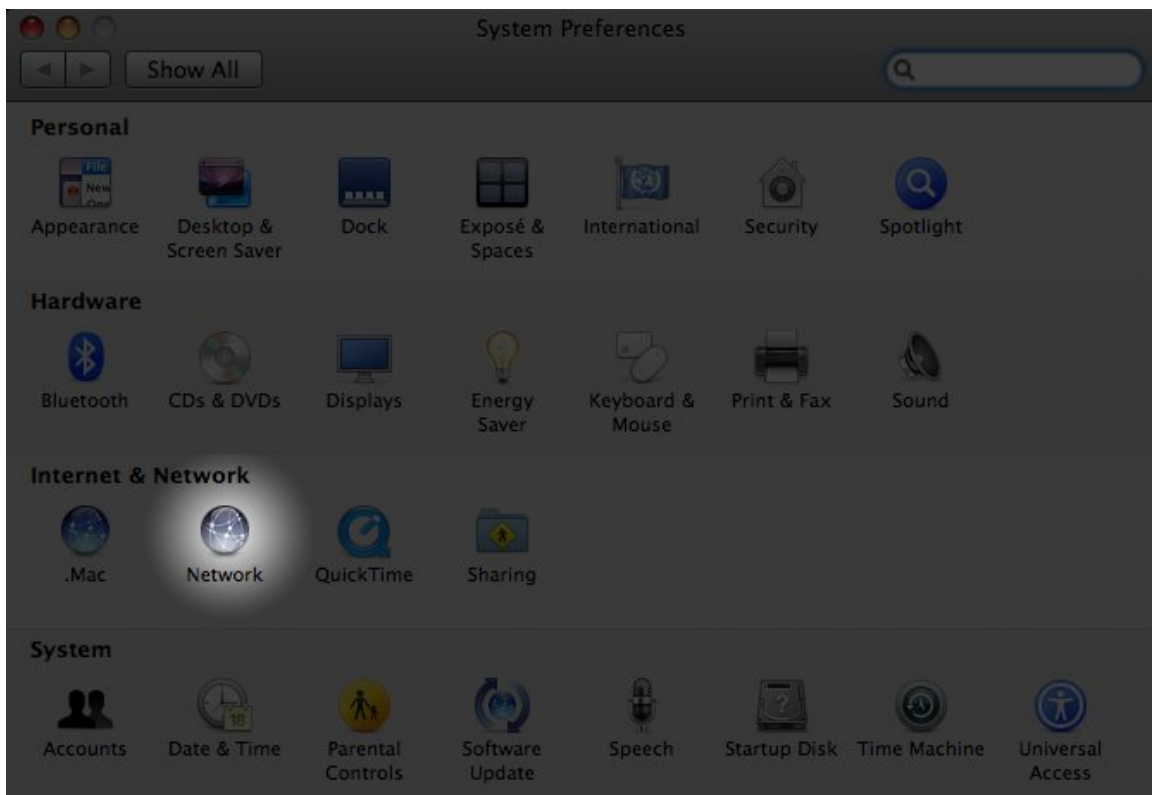


## PPPoE SETUP FOR MAC OS X 10.5

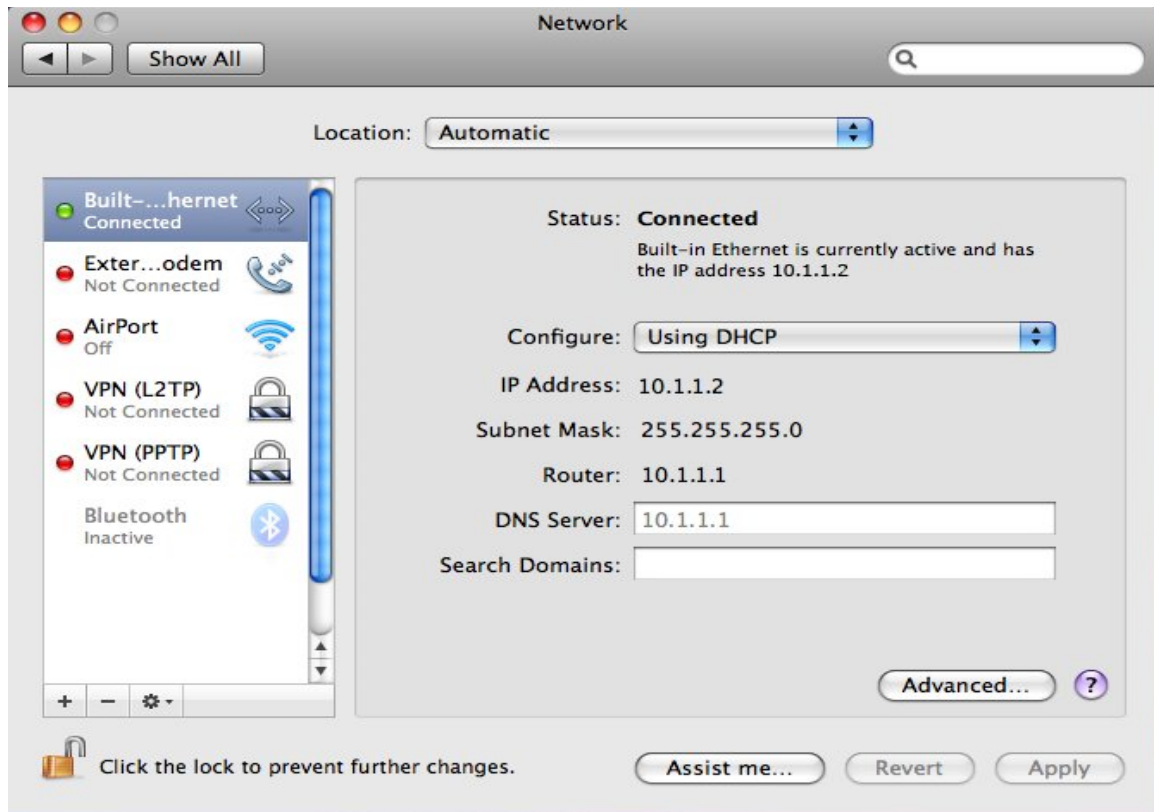
- 1) Start by going to "System Preferences" by either selecting it from gears icon in the top menu bar or open it from the Dock.



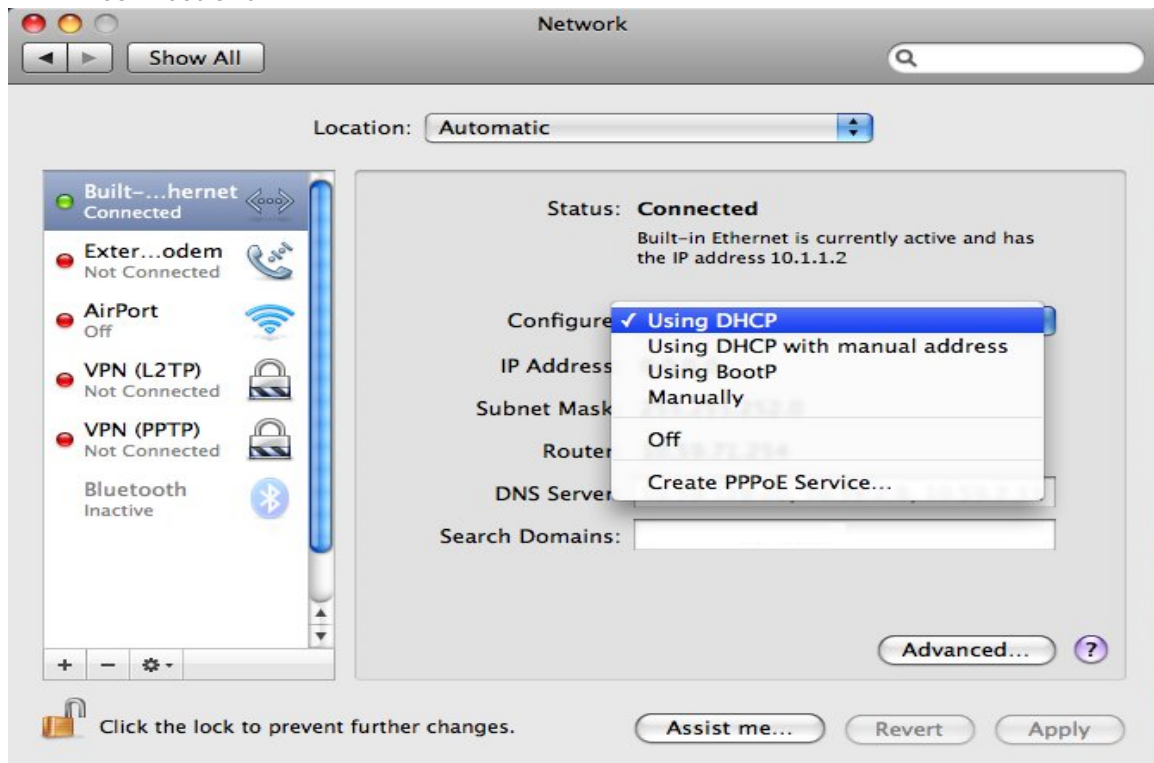
- 2) Click the "Network" icon to continue.



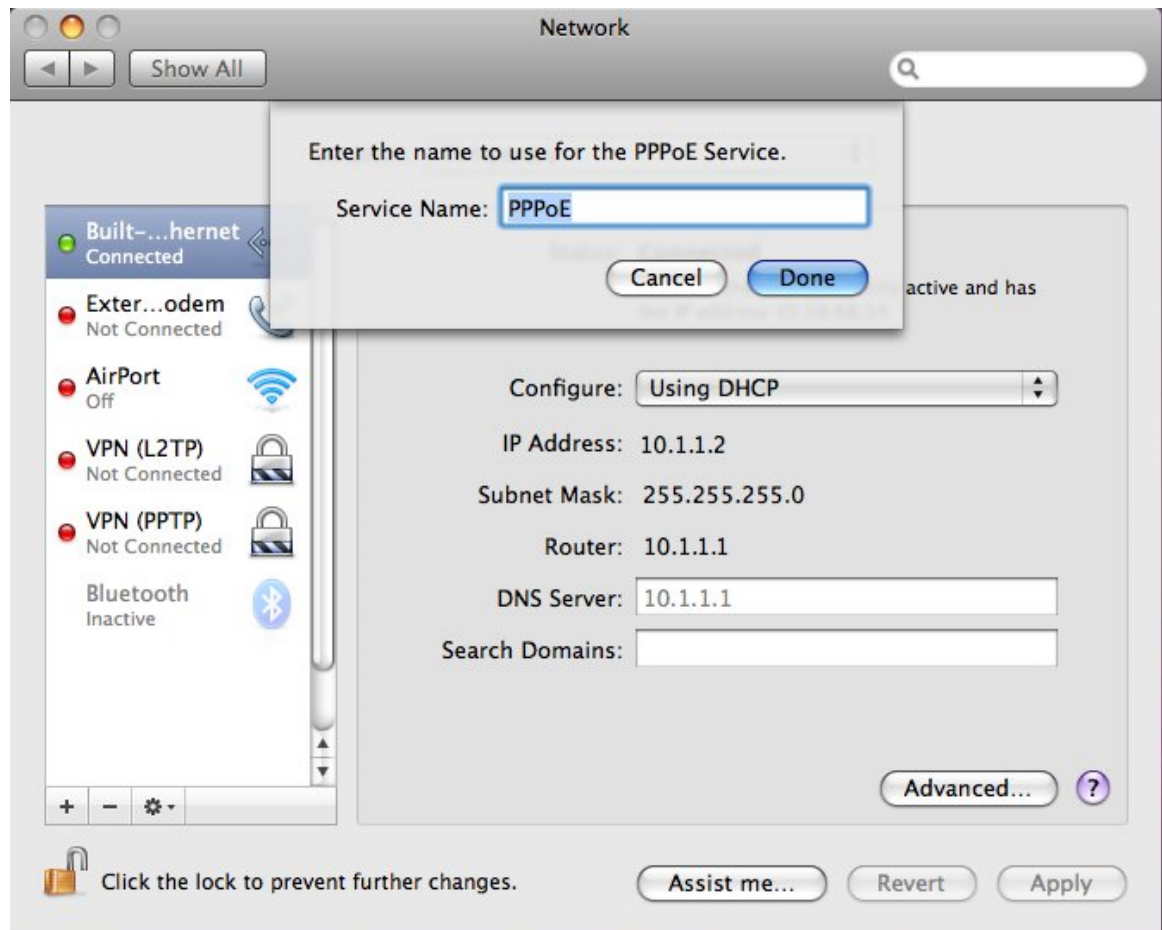
- 3) This will give you an idea of what's going on with the various network configurations on your Mac. You will automatically be directed to the highest priority connection which by default is "Built-in Ethernet". This is okay as this is where we need to be.



- 4) Click on the "Configure" menu to reveal the options for Built-in Ethernet connections.



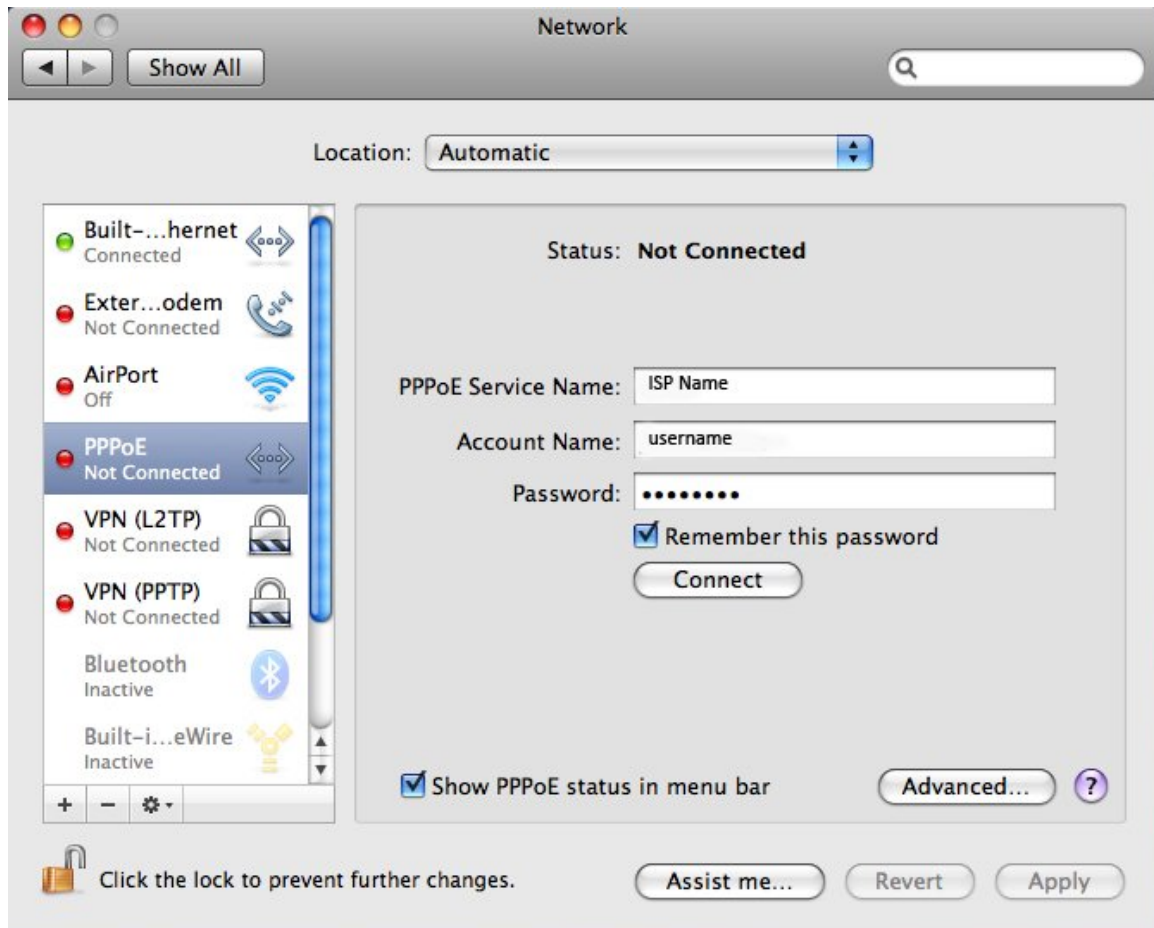
- 5) From here choose the "Create PPPoE Service" option. You will be prompted to name the connection.



- 6) Once you name the connection you will be presented with the setup screen for the PPPoE connection. Enter your username and password (case sensitive). By ticking "Show PPPoE status in menu bar" a small object will appear in your top menubar. This will allow you to control the connection from your desktop.

Enter the information for your account:

- Username: Enter your username, e.g. [6047366500@pppoe.net](mailto:6047366500@pppoe.net)
- Password: Enter your password e.g. [V6H1E5](#)
- Confirm password: Enter your password again



- 7) Click "Apply Now". When you click on "Connect", your computer will attempt to connect using PPPoE. Notice the new icon in the top right of your screen? This new icon will allow you to activate this PPPoE connection. Once connected to the Internet, you can also use the same icon to disconnect.

