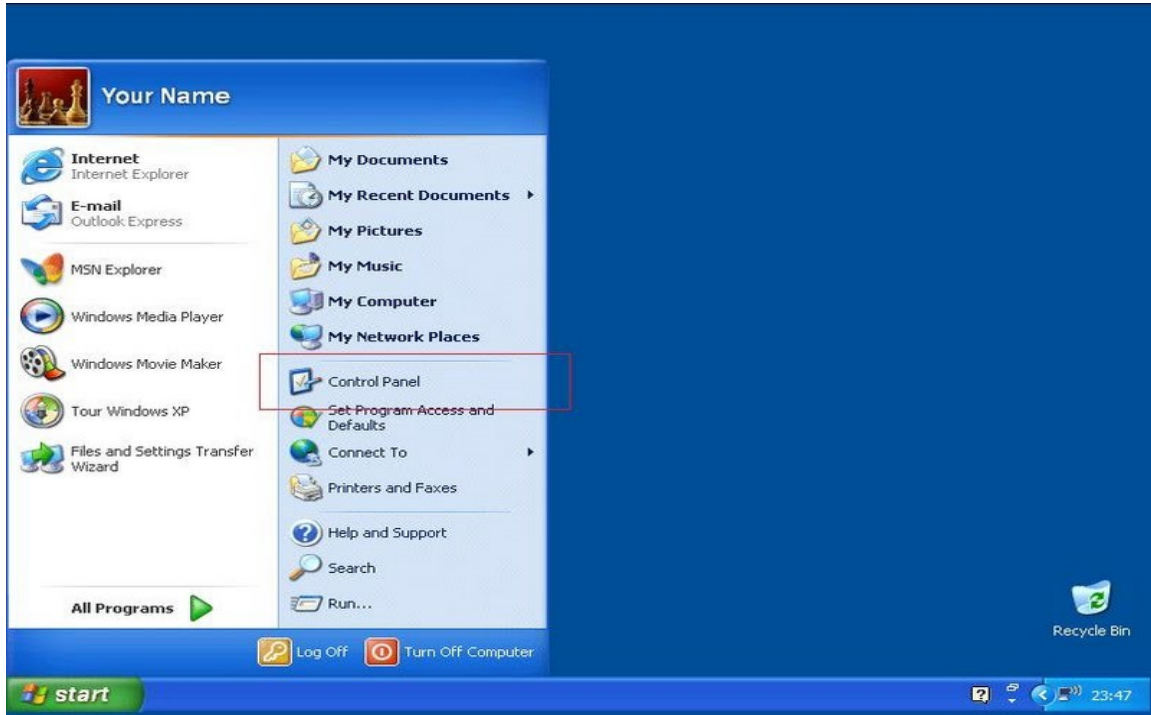


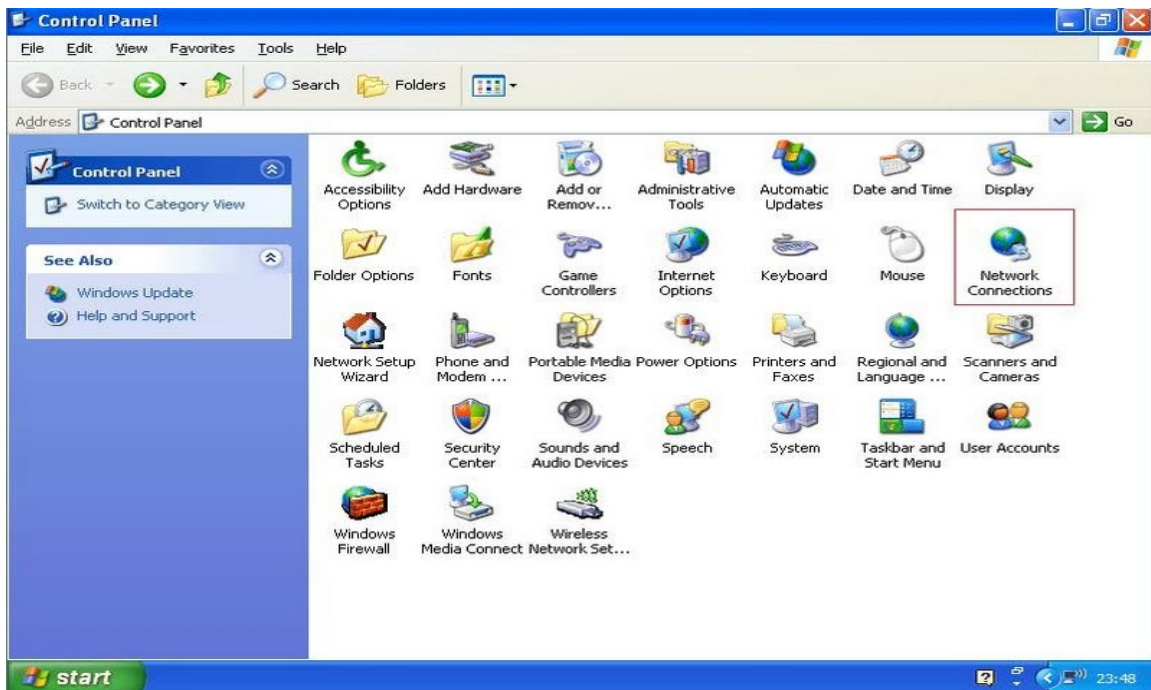
STEPS IN CREATING PPPOE DIALER IN WINDOWS XP

PPPoE is now native in Windows XP. This is what you need to do:

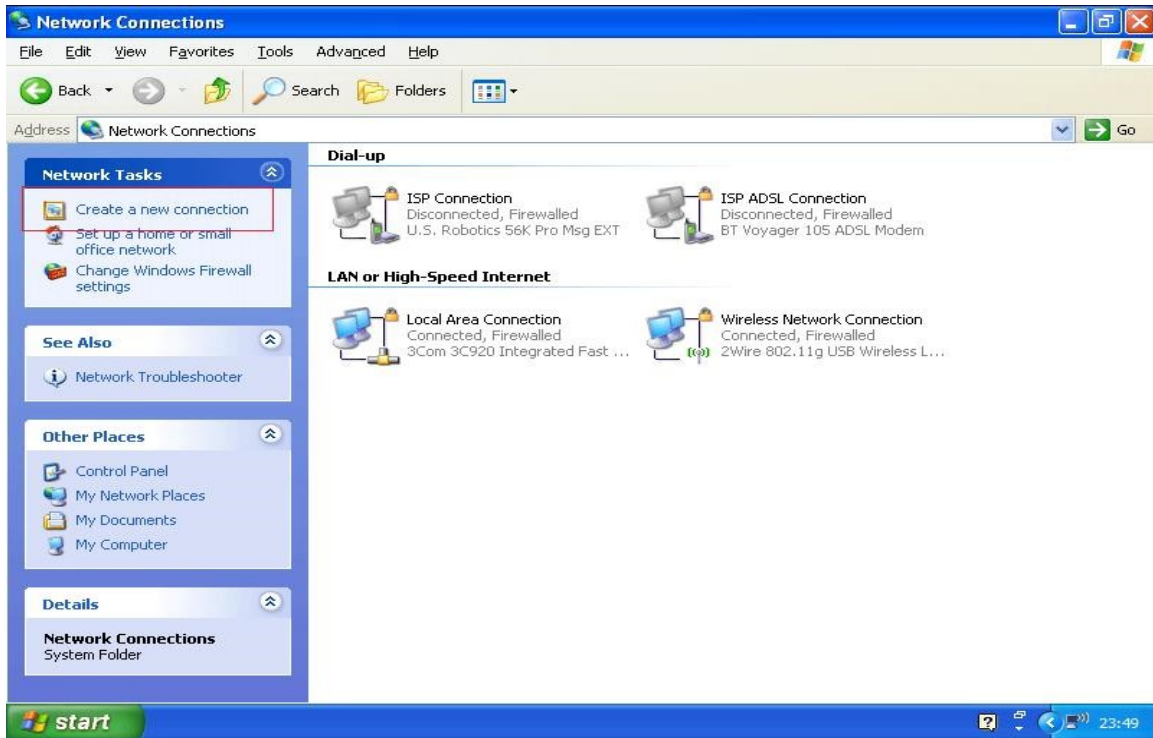
1) Go to "Start" -> "Control Panel"



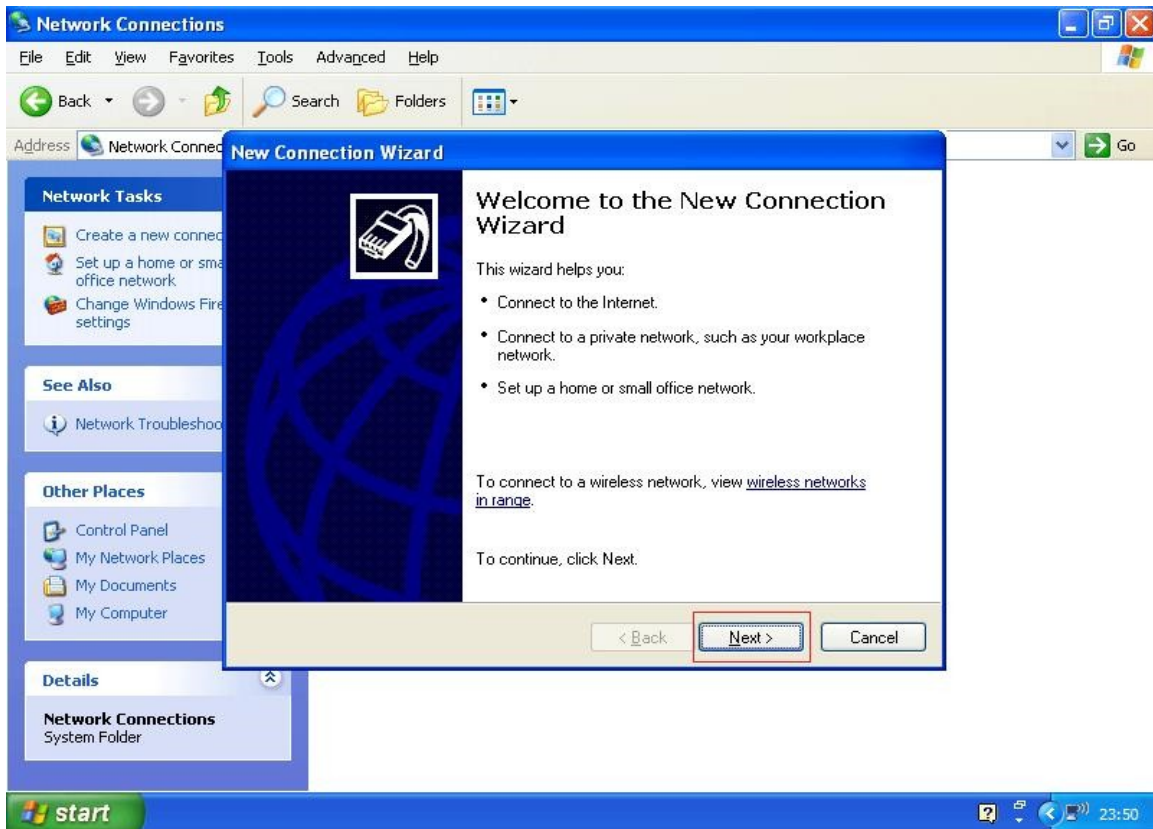
2) Click on "Network Connections"



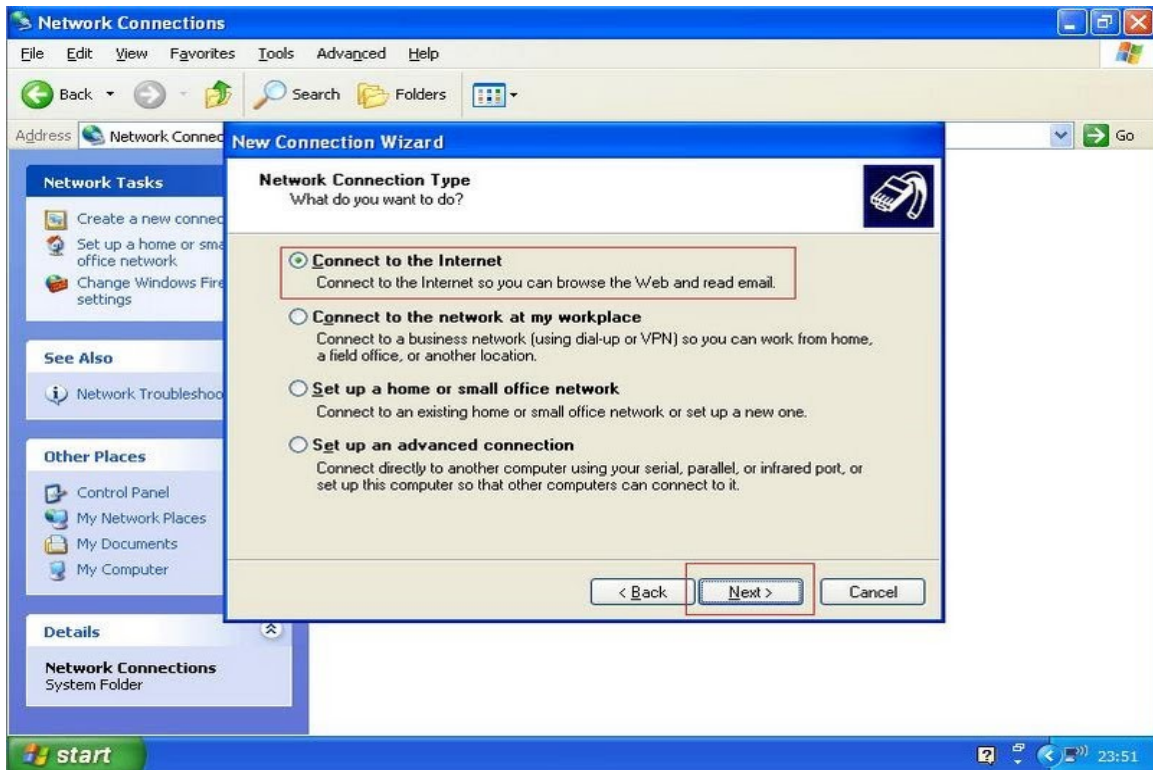
3) Click on "Create a new Connection"



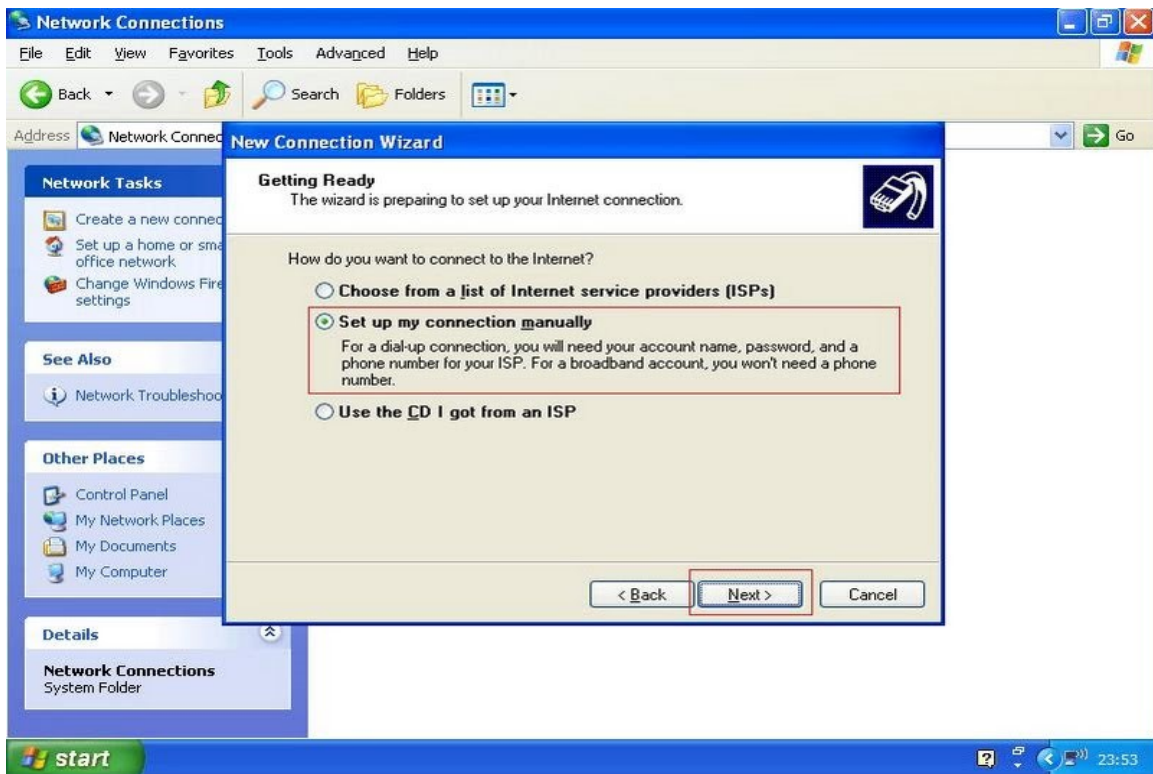
4) Click "Next"



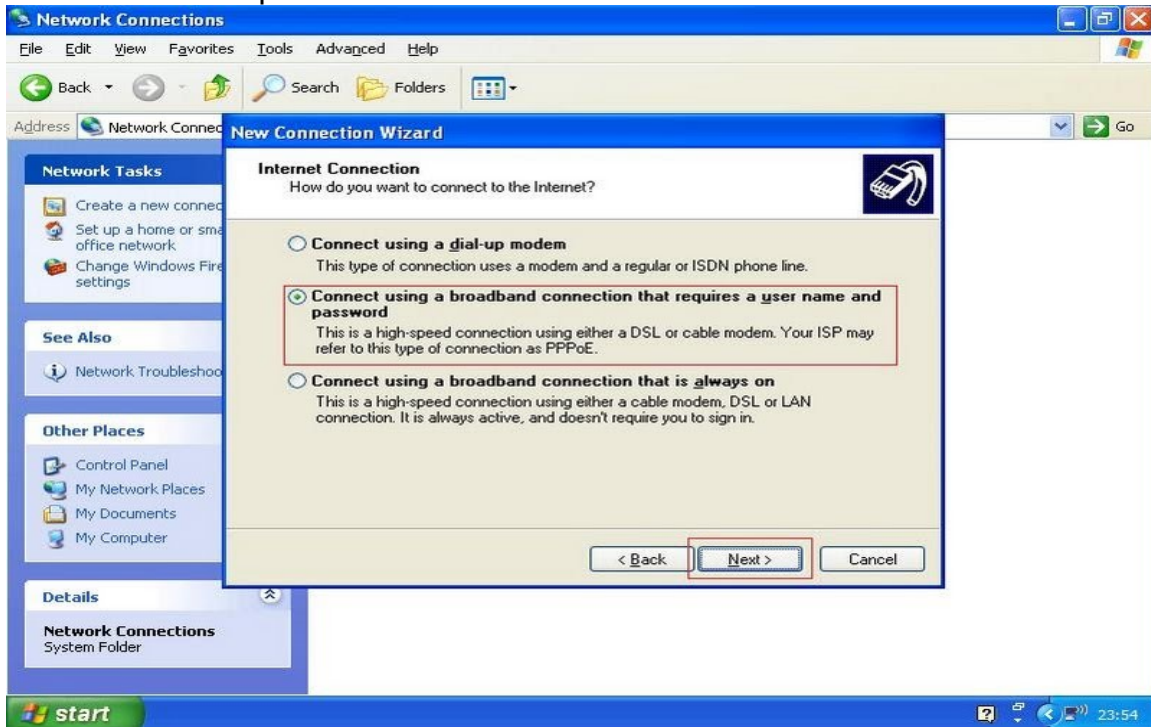
5) Check off "Connect to the Internet" -> Click "Next"



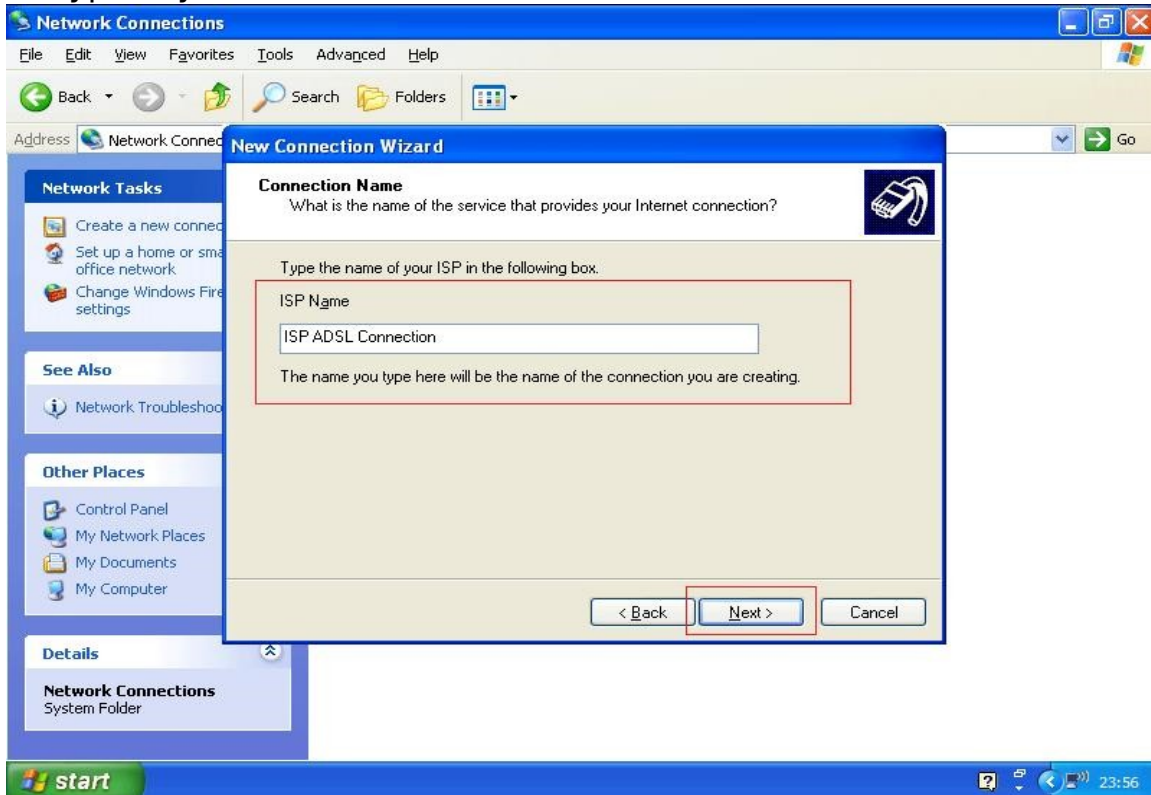
6) Check off "Set up my connection manually" -> Click "Next"



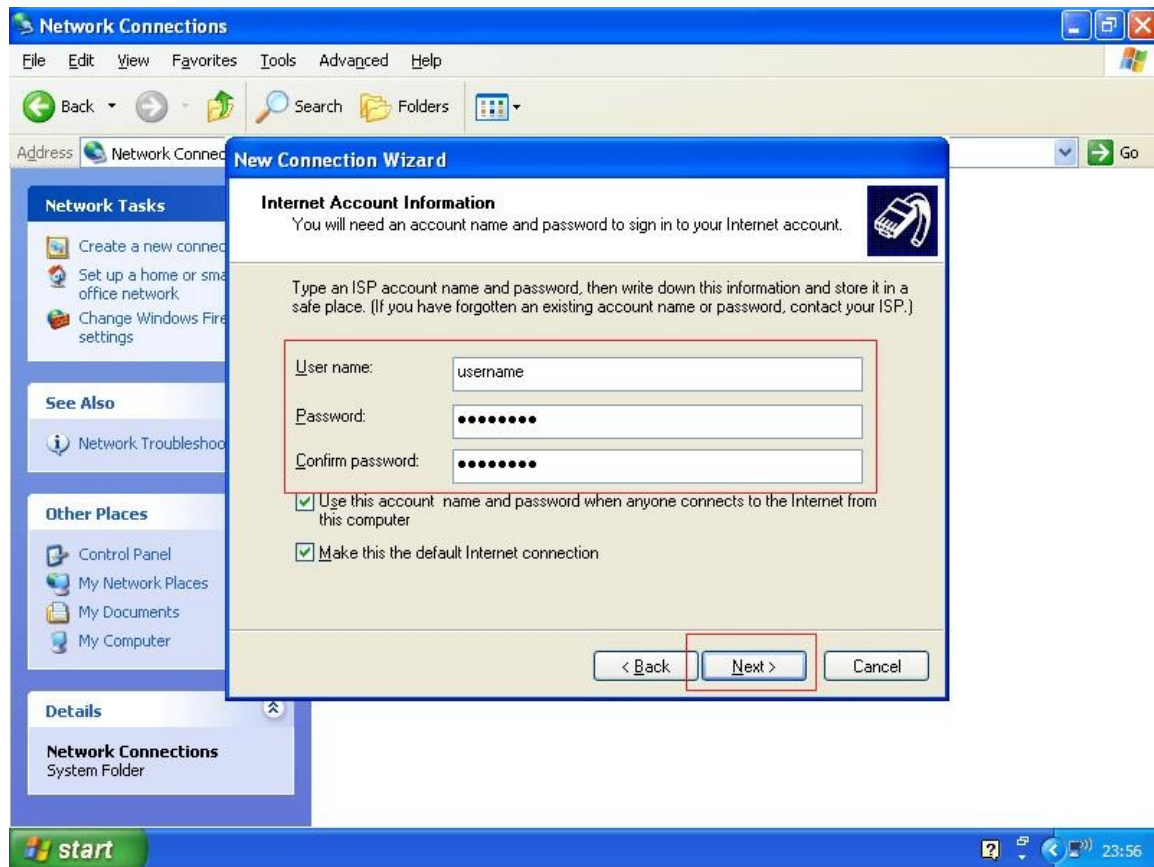
7) Check off "Connect using a broadband connection that requires a user name and password" -> Click Next



8) Type in your ISP's name -> Click "Next"



9) Enter your userid and your password as provided by your ISP (the password is very case sensitive), enter it a second time to confirm -> Check off "Use this account name" -> Check off "Make this the default internet connection" -> Click "Next"

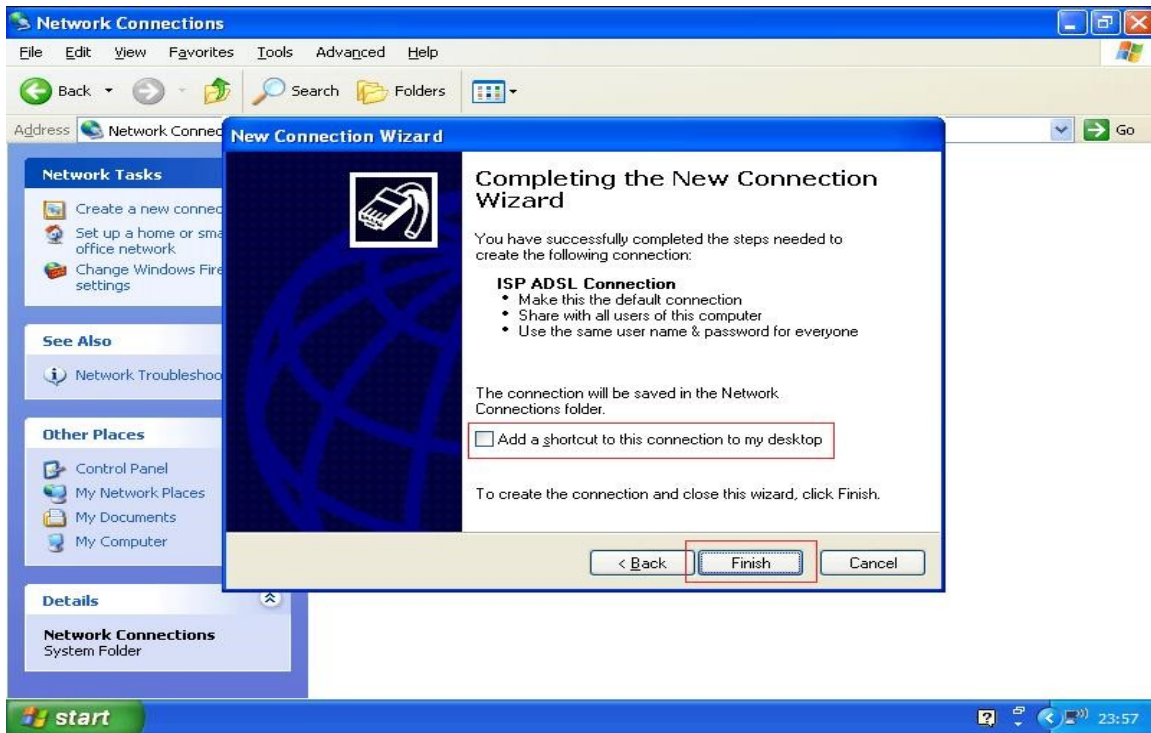


Note: you may need to include your ISP's domain as part of your userid. Example: **6047366500@pppoe.net**

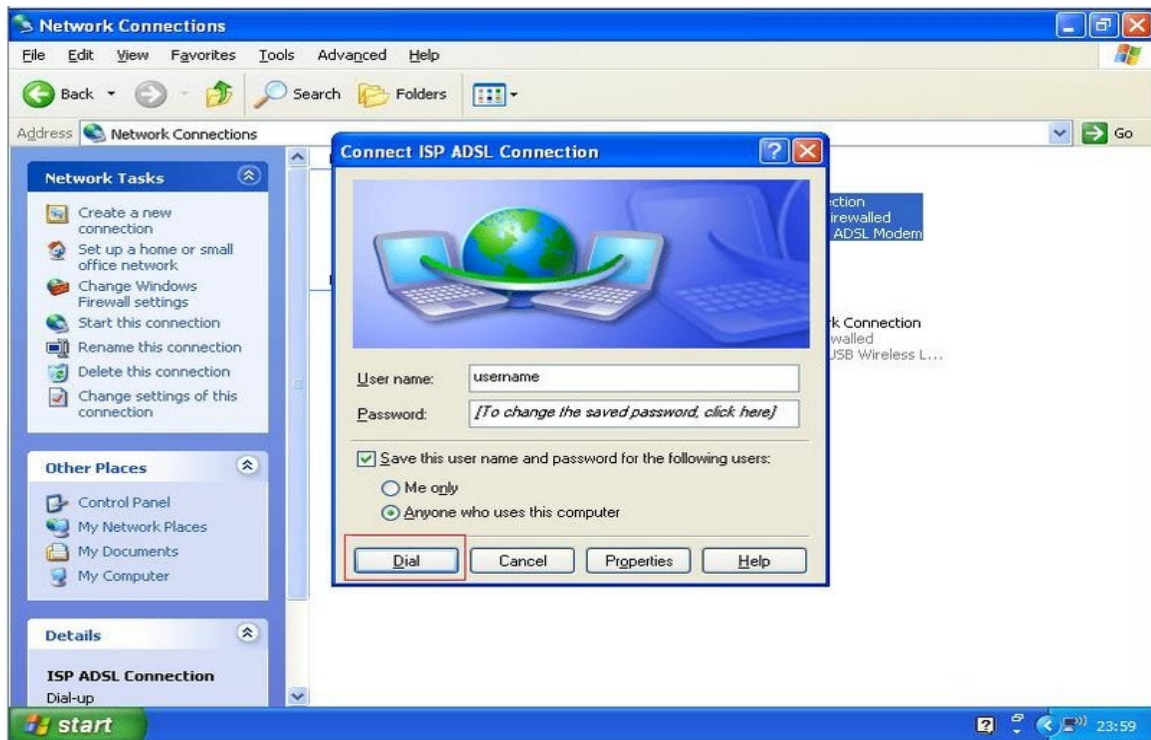
In "Internet Account Information", enter the information for your account:

- Username: Enter your username, e.g. **6047366500@pppoe.net**
- Password: Enter your password e.g. **V6H1E5**
- Confirm password: Enter your password again
- Ensure the two extra options are checked.

10) Check off "Add a shortcut to this connection to your desktop" -> Click "Next"



11) Click "Connect" then it will verify your username and password.



12) Surf away!

